



MUNICIPALITY OF
South Bruce

Hey there! Welcome home.

The Municipality of South Bruce is here to help you!
If you have any questions, please reach out.



www.southbruce.ca

Welcome to the Neighbourhood!

It is a great honour and pleasure to welcome you to South Bruce.

South Bruce is a community with a deep love for agriculture, environmental protection and healthy living. The rolling hills, trails and calm rivers provide scenic landscapes to explore and play in.

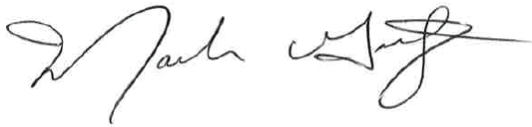
Our community will receive you with open arms, and our local events provide plenty of opportunities to meet new people and get acquainted with the many dedicated service clubs and municipal programming available right here in South Bruce.

To connect with us, and stay up to date on what's happening locally, check out our municipal website and social media accounts, including Facebook and Instagram.

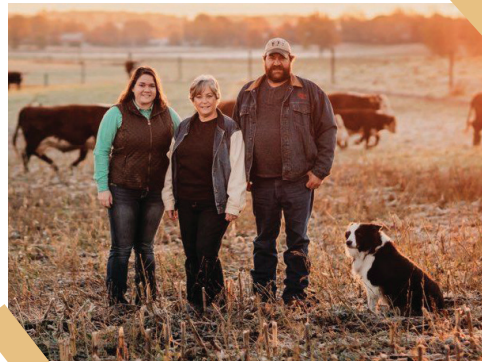
We hope that you fall in love with South Bruce the way I, and many generations before me, have fallen in love. South Bruce is a community full of people who support each other.

If you need anything we are just a call away. You can connect with me at 519-392-6623.

Thank you, and welcome home.



Mark Goetz, Mayor of South Bruce



South Bruce Municipal Office
21 Gordon Street East, P.O. Box
540 Teeswater, ON N0G 2S0

Open Monday to Friday:
8:30 a.m. to 4:30 p.m.

Phone: 519-392-6623

General Email:
clerk@southbruce.ca

www.southbruce.ca

Looking for information on
municipal road closures and
Interruptions? Subscribe to
our 511 service for real-time
updates:
www.municipal511.ca

Your New Home!

There is lots to learn about your new home. Here are a few things you should know:

Owning a Pet

Licences and tags are required for dogs. Urban properties can have two dogs maximum and rural properties can have three dogs maximum. Get the license and tag at the municipal office. There is no licensing or tag process for cats.



Property Taxes

Property taxes help pay for the municipal services we all rely on, like road maintenance, emergency services, municipal facilities, and more.

You can expect to receive two tax bills each year – an interim bill and a final bill. Pay close attention to the due dates for your tax bills to ensure you’ve paid on time and are up to date.

Your interim tax bill payments are due:

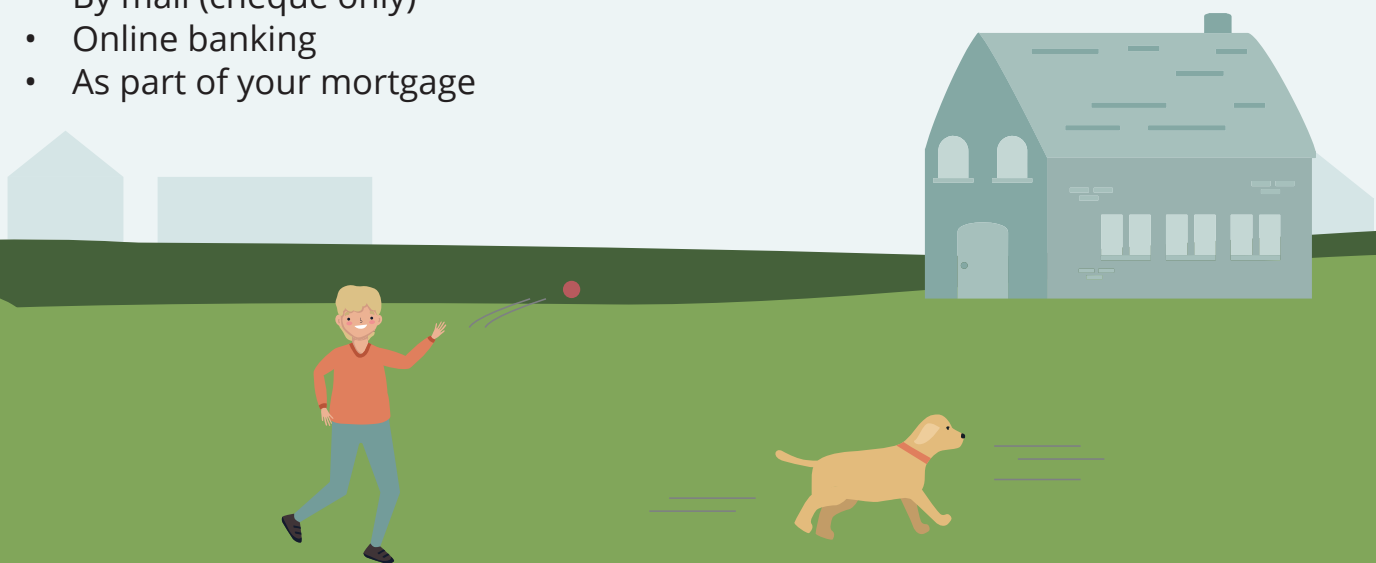
- Last Wednesday of March
- Last Wednesday of May

Your final tax bill payments are due:

- Last Wednesday of August
- Last Wednesday of October

Taxes can be paid by:

- Pre-authorized payments – set up at the municipal office
- At your bank
- In-person at the municipal office (cash, cheque or debit)
- By mail (cheque only)
- Online banking
- As part of your mortgage



Garbage and Recycling

South Bruce has weekly curbside garbage pickup and bi-weekly recycling pickup for residents in the **urban area**. Rural residents do not have curbside garbage or recycling pickup.

Carlsruhe and Mildmay have pickup on **Wednesdays** and recycling pickup bi-weekly on **Fridays**. Formosa and Teeswater have pickup on **Tuesdays** and recycling pickup bi-weekly on **Tuesdays**.

To avoid a missed pickup, please have your tagged garbage at the end of your driveway by **7 a.m.** on collection day.

Did your house get missed on garbage or recycling day?

For questions about garbage collection: Bruce Service, Sales & Rentals – 1-800-536-5175.
For questions about recycling: Bruce Area Solid Waste Recycling – 1-800-794-9770.

Where do I get bag tags?

Teeswater

- Municipal Office – 21 Gordon St E
- Sunny Mart – 8 'B' Clinton St S
- Midwest Co-op – 29 Clinton St S

Formosa

- Canada Post – 1227 Bruce Rd. 12

Mildmay

- Mildmay Foodmart – 1024 Highway 9
- Mac's Milk – 57 Elora St
- Midwest Co-op – 1056 Highway 9 S
- Liesemer's Home Hardware – 98 Elora St
- Mildmay Mini-Mart – 54 Elora St
- Harley's Pub & Perk – 87 Elora St

Landfill

Rural residents do not have curbside pickup but may visit one of our two landfills to dispose of their garbage and recycling. You must be a property owner in the Municipality to access the landfill and may be asked for proof of residency. All garbage must be tagged.

Landfill sites:

Teeswater-Culross landfill – 438 Bruce Road 6, Teeswater, ON

Teeswater landfill accepts all garbage, recycling, and large waste items like construction materials. This site has a weigh station for calculating disposal fees.

Operating hours:

- Tuesdays and Thursdays from 9 a.m. to 1 p.m.
- Saturdays from 9 a.m. to 4 p.m.
- Closed on statutory holidays

Mildmay-Carrick landfill – 2 Bruce Road 6E, Mildmay, ON

Mildmay landfill only accepts household garbage (bagged) and recycling.

Our operating hours are:

- Wednesdays from 9 a.m. to 12 p.m.
- Saturdays from 9 a.m. to 4 p.m.
- Closed on Statutory Holidays

Healthcare

Medical Clinics/Hospitals

Mildmay Community Medical Clinic –
12 Absalom Street E, Mildmay, ON N0G 2J0
Phone: 519-507-2021

Teeswater Medical Centre –
28 Clinton Street S, Teeswater, ON N0G 2S0
Phone: 519-392-6813

Wingham and District Hospital –
270 Carling Terrace, Wingham, ON N0G 2W0
Phone: 519-357-3210

South Bruce Grey Health Centre –
21 McGivern Street W., Walkerton, ON N0G 2V0
Phone: 519-881-1220

Pharmacies

Stewart's Pharmacy – 1024
Highway 9, Mildmay ON, N0G 2J0
Phone: 519-367-5521

Teeswater Pharmacy – 28
Clinton Street S, Teeswater ON,
N0G 2S0
Phone: 519-392-3000

Mental Health and Addiction Services

Canadian Mental Health Association (CMHA) Grey Bruce
Phone: (519) 371-3642 or 1-888-451-2642
Website: www.greybruce.cmha.ca

Grey Bruce Health Unit
Toll-free: 1-800-263-3456
Website: <http://www.publichealthgreybruce.on.ca/>

Public Health Agency of Canada
Toll-free: 1-844-280-5020
Website: <https://www.canada.ca/en/public-health.html>





Schools & Childcare

Bluewater District School Board – 351 1st Avenue N, Chesley, Ontario N0G 1L0

Phone: (519) 363-2014

Email: info@bwdsb.on.ca

Website: <https://www.bwdsb.on.ca/>

Elementary School

Mildmay Carrick Public School – 1023 Highway 9, Mildmay, ON

Website: <https://mld.bwdsb.on.ca/>

Hillcrest Central School – 31 Hillcrest St. W, Teeswater, ON

Website: <https://tee.bwdsb.on.ca/>

Bruce-Grey Catholic District School Board – 799 16th Ave., Hanover, ON N4N 3A1

Phone: (519) 364-5820

Email: bruce_grey@bgcdsb.org

Website: <https://www.bgcdsb.org/>

Elementary School

Mildmay Sacred Heart School – 18 Peter St. Mildmay, ON

Phone: (519) 367-2685

Website: <https://msh.bgcdsb.org/>

Teeswater Sacred Heart School – 18 Gordon St. Teeswater, ON

Phone: (519) 392-6854

Website: <https://tsh.bgcdsb.org/>

French Immersion Elementary School

Immaculate Conception School – 201 Concession 12 Formosa, ON

Phone: (519)367-2900

Website: <https://ics.bgcdsb.org/>



Before and after school childcare program

Sacred Heart School (Kids & Us) – 18 Peter St. Mildmay, ON
Phone: (519) 986-3692

Sacred Heart School (Municipal Program) – 18 Gordon St. Teeswater, ON
Phone: (519) 392-6623
Website: <https://www.southbruce.ca/baschoolcare/>

Secondary Schools

Sacred Heart High School – 450 Robinson St. Walkerton, ON
Phone: (519) 881-1900
Website: <https://shhs.bgcdsb.org/>

Walkerton District Community School – 1320 Yonge St. S Walkerton, ON
Phone: (519) 881-1780
Website: <https://wdc.sbwdsb.on.ca/>

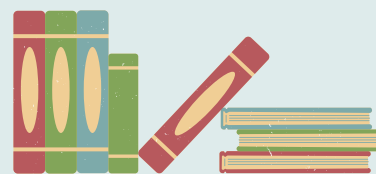
F.E. Madill Secondary School – 231 Madill Dr. Wingham, ON
Phone: (519) 357-1800
Website: <https://femss.amdsb.ca/>

Bus Transportation

Voyago Transportation – Hanover, ON (800) 586-5357
Montgomery Bus Lines – Wingham, ON (855) 557-9191

Public Libraries

Our public libraries are free to use and offer lots of books to borrow, programs to attend, and services. Most libraries also have computers and printers, meeting rooms, and free Wi-Fi.



Bruce County Public Library

There are 17 Branches of Bruce County Public Library. You are welcome to visit any of the Branches, and your library card will work at all of them. We have two Bruce County Public Libraries in South Bruce:

Mildmay Location – 51 Elora St. Mildmay, ON

Phone: (519) 367-2814

Website: <https://library.brucecounty.on.ca/branch/mildmay/>

Teeswater Location – 2 Clinton St. S Teeswater, ON

Phone: (519) 392-6801

Website: <https://library.brucecounty.on.ca/branch/teeswater/>

Formosa Community Library

15 Community Dr., Formosa (Inside Recreation Centre)

This community-based library that has books, games, videos and other resources that have been donated.



Recreation Centres

Teeswater-Culross Community Centre – 19 Marcy St. Teeswater, ON

This facility includes an ice rink, community hall and private meeting rooms and can accommodate a variety of events.

For rentals call 519-392-6902 or book online at www.southbruce.ca.

Teeswater Town Hall – 3 Clinton St. S. Teeswater, ON

Historic theatre with separate rental area and kitchen.

For rentals call 519-392-6623 or book online at www.southbruce.ca.

Mildmay-Carrick Recreation Centre – 24 Vincent St. Mildmay, ON

This facility includes an ice rink, community hall and private meeting rooms and can accommodate a variety of events.

For rentals call 519-367-2624 or book online at www.southbruce.ca.

Formosa Community Centre – 13 Community Dr., Formosa, ON

Two story facility with community hall and full kitchen to accommodate a variety of events.

For rentals call 519-901-0013 or book online at www.southbruce.ca.

Formosa Recreation Centre – 15 Community Dr. Formosa, ON

Offers an outdoor covered rink, community library and kitchen.

For rentals contact the Formosa Lions at 519-367-5969.



Parks & Trails

Our recreational parks offer fun for the whole family with many playgrounds, picnic areas and more. The parks expansive greenspaces, rivers and ponds, and tree foliage provide a scenic escape for those looking to enjoy nature.

Formosa Lions Park – 206 Council Rd, Formosa, ON
Mildmay Carnegie Park – 12 Absalom St, Mildmay, ON
Mildmay Rotary Park – 130 Elora St, Mildmay, ON
Mildmay Optimist Arena Park – 24 Vincent St, Mildmay, ON
Mildmay Lions Wilderness Park – 23 Absalom St W, Mildmay, ON
Teeswater Kinsmen Park – 13 Clinton St S, Teeswater, ON
Teeswater Lions Park – 12 Hillcrest St, Teeswater, ON

If outdoor recreation is more your style, check out South Bruce's multi-use trail system. We have trails for all skill levels and abilities.

- Mildmay Rotary Trail
- Bruce Trail
- Carrick Tract trail



Places of Worship

A sense of community can be found at many of South Bruce's places of worship. A wide range of religious denominations are represented here.

Restaurants & Shops

South Bruce has several restaurants and unique generational shops for all your daily needs. We pride ourselves in supporting local to keep our communities strong and thriving. For a listing of restaurants and shops, please visit our business directory on our municipal website: www.southbruce.ca.

Immigration and Canadian Government Information

Locally, there are resources for new Canadians. Not finding what you're looking for? Reach out to the municipal office for assistance.

Grey Bruce Local Immigration Partnership

<https://greybrucelip.ca/>

Phone: (519) 372-0219 ext. 6108

211 Ontario

<https://211ontario.ca/>

Toll Free Phone: 1-877-330-3213

Service Canada

<https://www.canada.ca/>

Toll Free Phone: 1-800-622-6232

How to get involved

Volunteering is a great way to meet new people, make connections and give back to your community. South Bruce has a variety of service groups and organizations looking for new members. Contact the municipal office at 519-392-6623 to connect with these service groups. Local South Bruce organizations include:

- Teeswater Agricultural Society
- Teeswater Swans
- Teeswater Kinsmen
- Mildmay-Carrick Agricultural Society
- Mildmay-Carrick Optimist Club
- Mildmay Lions
- Mildmay Rotary Club
- Formosa Lions
- Formosa Swans
- South Bruce Tourism Committee





MUNICIPALITY OF
South Bruce

South Bruce Municipal Office
21 Gordon Street East, P.O. Box
540 Teeswater, ON N0G 2S0

Open Monday to Friday:
8:30 a.m. to 4:30 p.m.

Looking for information on
municipal road closures and
Interruptions? Subscribe to
our 511 service for real-time
updates:
www.municipal511.ca

Phone: 519-392-6623

General Email:
clerk@southbruce.ca

www.southbruce.ca

Find us on Facebook, Instagram, and
LinkedIn using our municipal handle
[@municipalityofsouthbruce](https://www.facebook.com/municipalityofsouthbruce) 